

Duncan® Envision® GLAZES Sprinkles™

Sprinkle on the creativity with 10 additions to the Envision® Glazes family! Packed with loads of super spotted fun, these vibrant renditions of classic favorites will make your projects pop with personality.



Choose Design

Decorate

Embellish

Seal & Beautify

Baker's Bouquet

Seasonal Blooms Measuring Cups Set with Base

Materials Needed:

Duncan® Oh Four® Bisque
28573 Seasonal Blooms
Measuring Cup Set with Base

Duncan® Envision® Glazes
IN 1062 Light Kiwi

Duncan® Envision® Glazes Sprinkles™
IN 1207 Neon Red Sprinkles
IN 1208 Neon Orange Sprinkles
IN 1209 Neon Yellow Sprinkles
IN 1215 White Sprinkles

Duncan® Concepts® Underglazes for Bisque
CN 253 Black

Duncan® Pure Brilliance® Clear Glaze

Signature Brushes
SB 802 No. 1 Liner
SB 806 No. 6 Round
SB 807 No. 6 Fan Glaze

Miscellaneous Supplies
Sponge
Container for water
Foil or foam plate for palette

Instructions:

1. Wipe ware with damp sponge to remove bisque dust.
2. Using the Fan Glaze, brush three coats of **Light Kiwi** on entire leaf base. Use the No. 6 Round to brush three coats of this same color on measuring cup handles, avoiding rectangular measurement area on each cup.
3. Glaze the inside and outside of each measuring cup with three coats each of **Neon Red Sprinkles, Neon Orange Sprinkles, Neon Yellow Sprinkles** and **White Sprinkles** as shown. Let dry completely.
4. Load the No. 1 Liner with **Black** and fill in the etched measurements on each measuring cup handle. Once dry, use the No. 6 Round to brush two coats of **Pure Brilliance® Clear Glaze** over the measurement rectangle on handles. Let dry completely.
5. Stilt and fire to cone 06.



Always in Bloom Picture Frame 3

Materials Needed:

Duncan® Oh Four® Bisque
29060 Picture Frame 3

Duncan® Envision® Glazes
IN 1047 Roasted Pepper
IN 1053 Harvest

Duncan® Envision® Glazes Sprinkles™
IN 1208 Neon Orange Sprinkles
IN 1210 Light Kiwi Sprinkles

Instructions:

1. Wipe ware with damp sponge to remove bisque dust.
2. Place clay carbon paper on bottom right of frame with pattern on top, then trace over just the outline of flower to transfer design onto frame.
3. Condition the No. 6 Round with **Duncan® Brush Cleaner**, then use to apply one good coat of **Mask 'n Peel™** onto the flower area on front of frame. Let dry thoroughly and clean brush.
4. Using the Fan Glaze, apply three coats of **Harvest** to the front and back of frame. Use a paper towel to gently dab glaze off **Mask 'n Peel™** after each coat.
5. Once the third coat of **Harvest** loses its sheen but before it completely dries, use safety pin to gently lift the edge of **Mask 'n Peel™** and peel off of frame. Clean any color crumbs or jagged edges around flower with a damp brush.
6. Realign pattern and clay carbon paper over flower area

For best results

Please read all instructions before beginning each project. Refer to photo for color and design placement. Let color dry between coats. Patterns can be downloaded at www.ilovetocreate.com

Duncan® Pure Brilliance® Clear Glaze

Accessory Product
AS 548 Mask 'n Peel™
AS 952 Duncan® Brush Cleaner

Signature Brushes
SB 802 No. 1 Liner
SB 804 No. 4 Round
SB 806 No. 6 Round
SB 807 No. 6 Fan Glaze Brush

Miscellaneous Supplies
Sponge
Container for water
Foil or foam plate for palette
Clay carbon paper
Pencil
Paper towels
Safety pin
Flower pattern

7. Load the No. 6 Round in **Neon Orange Sprinkles** then use the "press, pull, lift" technique to pull in the long petals. Reload for each petal, allowing the color to be heavier around the petal edges and thinner in the middle. Repeat for the two outer rows of petals. Apply three coats, keeping some white areas between the petals.
8. Use the No. 4 Round and **Neon Orange Sprinkles** to pull in the two rows of small petals around the center of flower, reloading for each stroke. Apply three coats.
9. Fill in the center of flower with three coats of **Light Kiwi Sprinkles**, leaving a white highlight.
10. Use the No. 1 Liner to outline and detail the flower petals with **Roasted Pepper**.
11. Apply two coats of **Pure Brilliance® Clear Glaze** to the unpainted white areas within the flower, using the No. 1 Liner. Let dry completely.
12. Stilt and fire to cone 06.



Cute as a Button Small Mushroom Canister

Materials Needed:

Duncan® Oh Four® Bisque
28564 Small Mushroom Canister

Duncan® Envision® Glazes
IN 1044 Sand Diego

Duncan® Envision® Glazes Sprinkles™
IN 1207 Neon Red Sprinkles

Duncan® French Dimensions™
FD 254 Black Licorice

Instructions:

1. Wipe ware with damp sponge to remove bisque dust.
2. Pour some **Pure Brilliance® Clear Glaze** into canister base and swirl around while slowly tipping base upside down over paper cup, coating entire inside of base. Pour excess glaze into paper cup and wipe away any drips with a damp sponge.

Duncan® Pure Brilliance® Clear Glaze

Accessory Product
AS 548 Mask 'n Peel™
AS 952 Duncan® Brush Cleaner

Signature Brushes
SB 806 No. 6 Round
SB 807 No. 6 Fan Glaze

Miscellaneous Supplies
Sponge
Container for water
Circle pattern
Foil or foam plate for palette
Paper cup
Paper towels
Safety pin

3. Repeat process inside lid and use the No. 6 Round to brush **Pure Brilliance® Clear Glaze** around base of lid up to underside of mushroom top. Let dry then add a second coat around base of lid. Let dry.
4. Using pencil and circle pattern, create various sized circles around top of lid as shown.
5. Condition the No. 6 Round with **Duncan® Brush Cleaner** then use to brush one good coat of **Mask 'n Peel™** into each circle on lid. Let dry completely and clean brush.
6. Using the Fan Glaze, brush three coats of **Neon Red Sprinkles** onto top and underside of lid, brushing over the **Mask 'n Peel™**. Use a paper towel to gently dab glaze off **Mask 'n Peel™** after each coat.
7. Once third coat of **Neon Red Sprinkles** loses its sheen but before it completely dries, use safety pin to gently lift the edge of each **Mask 'n Peel™** spot and peel away. Clean any color crumbs or jagged edges around circles with a damp brush.
8. Use the No. 6 Round to brush two coats of **Pure Brilliance® Clear Glaze** onto each circle on lid. Let dry.
9. Add accents of **Black Licorice** around each circle.
10. Use the Fan Glaze to brush three coats of **Sand Diego** onto the outside of canister base, including the very bottom. Let dry.
11. Stilt and fire to cone 06.



Duncan® Envision® GLAZES Sprinkles™



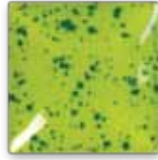
IN1207
Neon Red
Sprinkles



IN1208
Neon Orange
Sprinkles



IN1209
Neon Yellow
Sprinkles



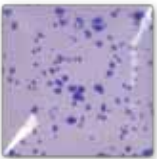
IN1210
Light Kiwi
Sprinkles



IN1211
Neon Blue
Sprinkles



IN1212
Cobalt Blue
Sprinkles



IN1213
Orchid
Sprinkles



IN1214
Honeysuckle
Sprinkles



IN1215
White
Sprinkles



IN1216
Very Black
Sprinkles



Available in 4-oz. and 16-oz. jars.



Kiln required



*Safe for use on
food containers*

Overglaze compatible.

Devilish Delight Deviled Egg Dish

Materials Needed:

Duncan® Oh Four® Bisque
29053 Deviled Egg Dish

Duncan® Envision® Glazes

IN 1053 Harvest
IN 1653 Downright White

Duncan® Envision® Glazes Sprinkles™

IN 1210 Light Kiwi Sprinkles

Signature Brushes

SB 806 No. 6 Round
SB 807 No. 6 Fan Glaze
SB 812 No. 10 Round

Miscellaneous Supplies

Sponge
Container for water
Pencil
Circle pattern
Foil or foam plate for palette



Instructions:

1. Wipe ware with damp sponge to remove bisque dust.
2. Using pencil and circle pattern, create a small circle in the very center of dish, then create a larger circle around small circle as shown.
3. Using the No. 6 Round, fill in small circle in center with three coats of **Light Kiwi Sprinkles**.
4. Use the No. 10 Round to brush three coats of **Light Kiwi Sprinkles** around egg indents as shown. Tip: If glaze is accidentally brushed into indents, use a damp sponge or wet brush to wipe away glaze for a clean surface.
5. Load the No. 6 Round with **Harvest** and brush three coats onto the circular area around the small circle in the center of dish and the egg indents.
6. Use the No. 10 and No. 6 Rounds as needed to fill in the remaining area on center of dish with **Downright White**. Let dry.
7. Use the Fan Glaze to brush three coats of **Light Kiwi Sprinkles** onto entire backside of dish. Let dry completely.
8. Stilt and fire to cone 06.

View the entire line of Duncan® Envision® Glazes at www.ilovetocreate.com

Learn more about Duncan® Envision®
Glazes Sprinkles™ from:

Duncan®

© 2011 iLoveToCreate®
5673 E. Shields Avenue
Fresno, CA 93727
www.ilovetocreate.com
PR 994 RM# 002649 8/11